

A Comparison of Term Appointees and Flexible Status Employees

Chart 1: Term Appointees and Flexible Status Employees in the **200 and 300** jobcode series, by month from April 30 to December 31, 1998.

Chart 2: Term Appointees and Flexible Status Employees in the **other jobcode series**, by month from April 30 to December 31, 1998.

Chart 3: Term Appointees, Flexible Status Employees, Indefinites and “All” **200s and 300s**, by month from April 30 to December 31, 1998.

Chart 4: Compares each appointment category for **50 series** employees, by month from April 30 to December 31, 1998.

Chart 5: Compares each appointment category for **100 series** employees, by month from April 30 to December 31, 1998.

Chart 6: Compares each appointment category for **200 series** employees, by month from April 30 to December 31, 1998.

Chart 7: Compares each appointment category for **300 series** employees, by month from April 30 to December 31, 1998.

Chart 8: Compares each appointment category for **400 series** employees, by month from April 30 to December 31, 1998.

Chart 9: Compares each appointment category for **500 series** employees, by month from April 30 to December 31, 1998.

Chart 10: Compares each appointment category for **600 series** employees, by month from April 30 to December 31, 1998.

Chart 11: Compares each appointment category for **700 series** employees, by month from April 30 to December 31, 1998.

Chart 12: Compares each appointment category for **800 series** employees, by month from April 30 to December 31, 1998.

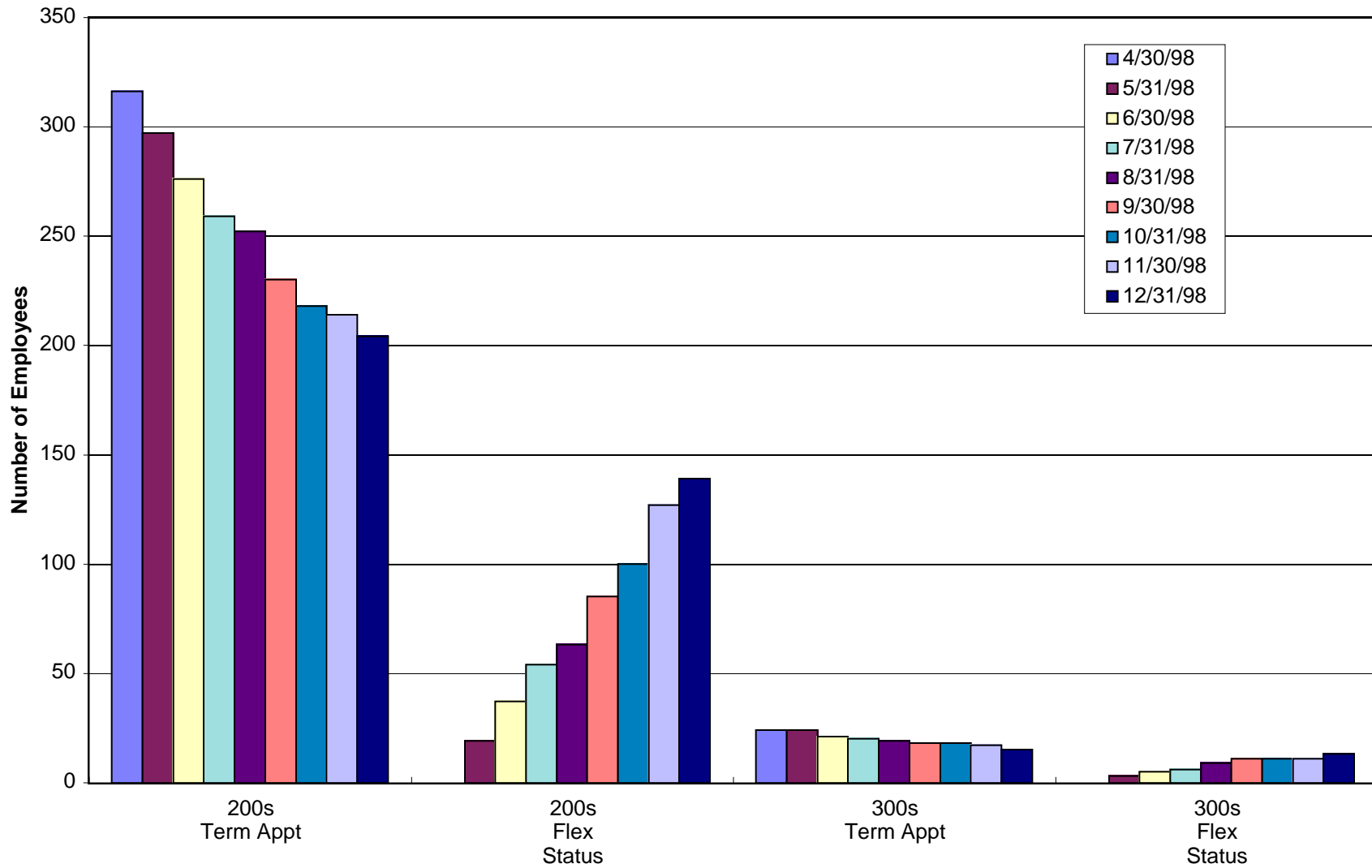
Chart 13: Compares each appointment category for **900 series** employees, by month from April 30 to December 31, 1998.

Chart 14: **Total** number of employees, by month from April 30 to December 31, 1998.

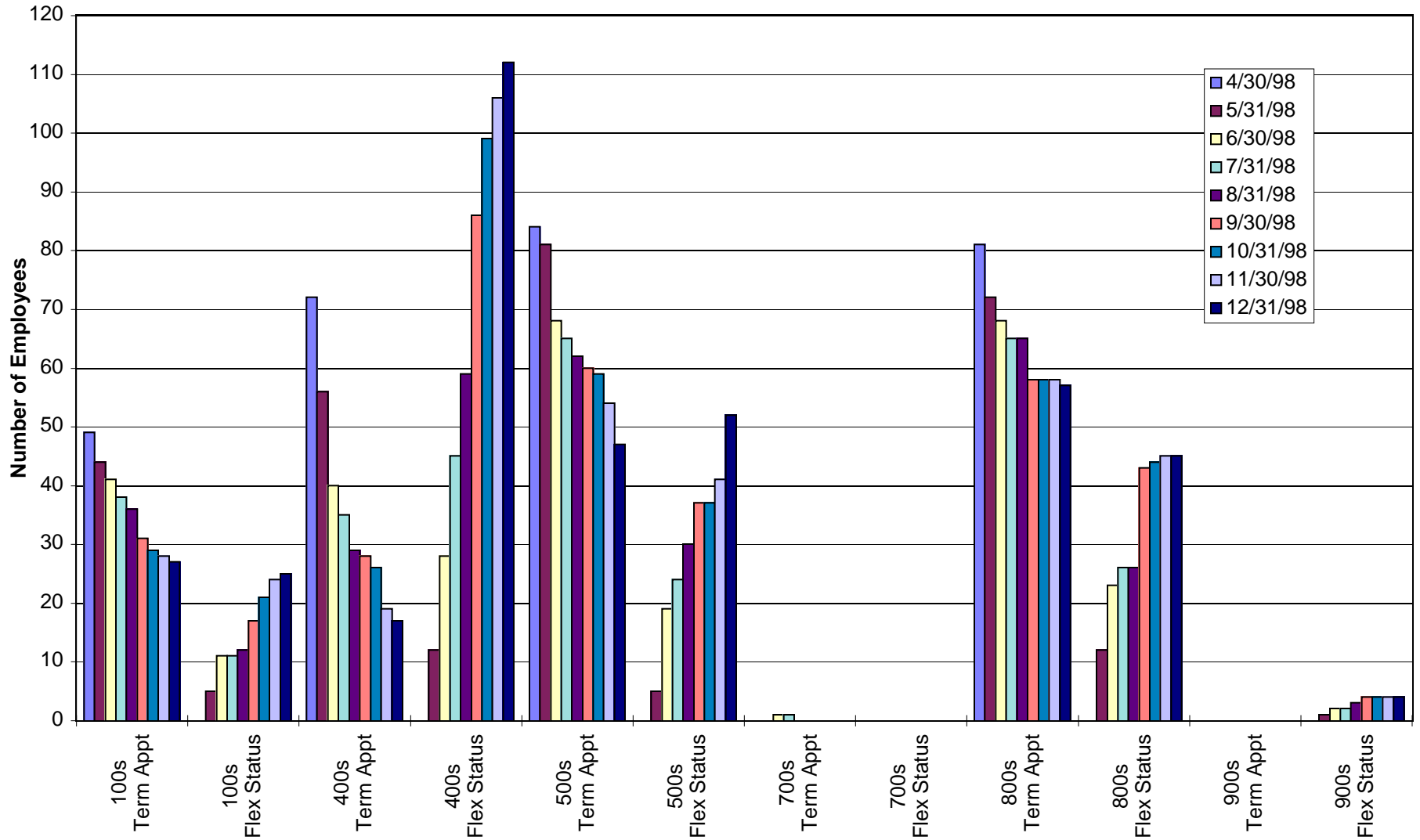
[Go here to see a list of jobcodes that includes titles.](#)

[Go here to see a list of appointment codes and their descriptions.](#)

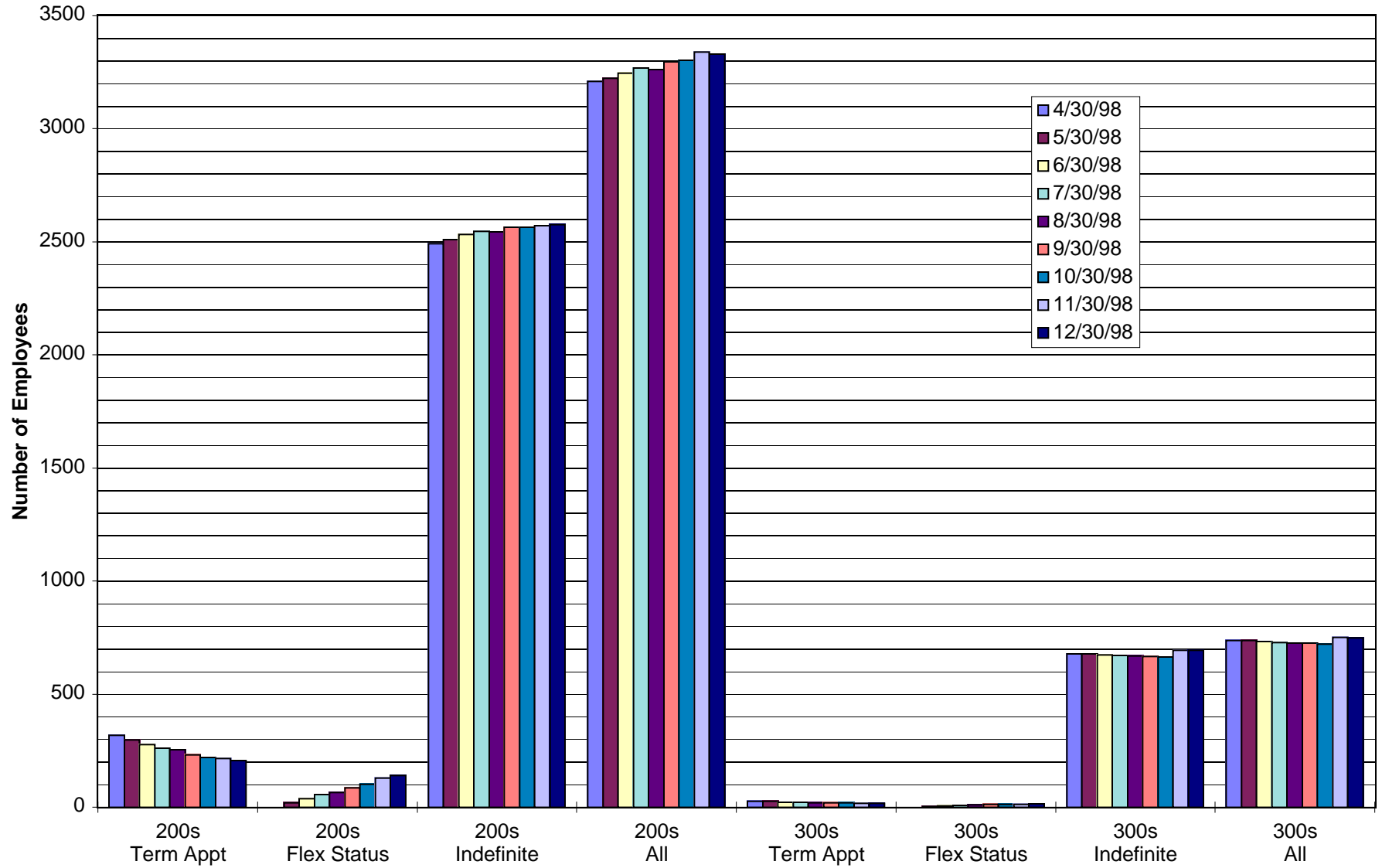
Term Appointees vs. Flexible Status Employees 200 and 300 Series



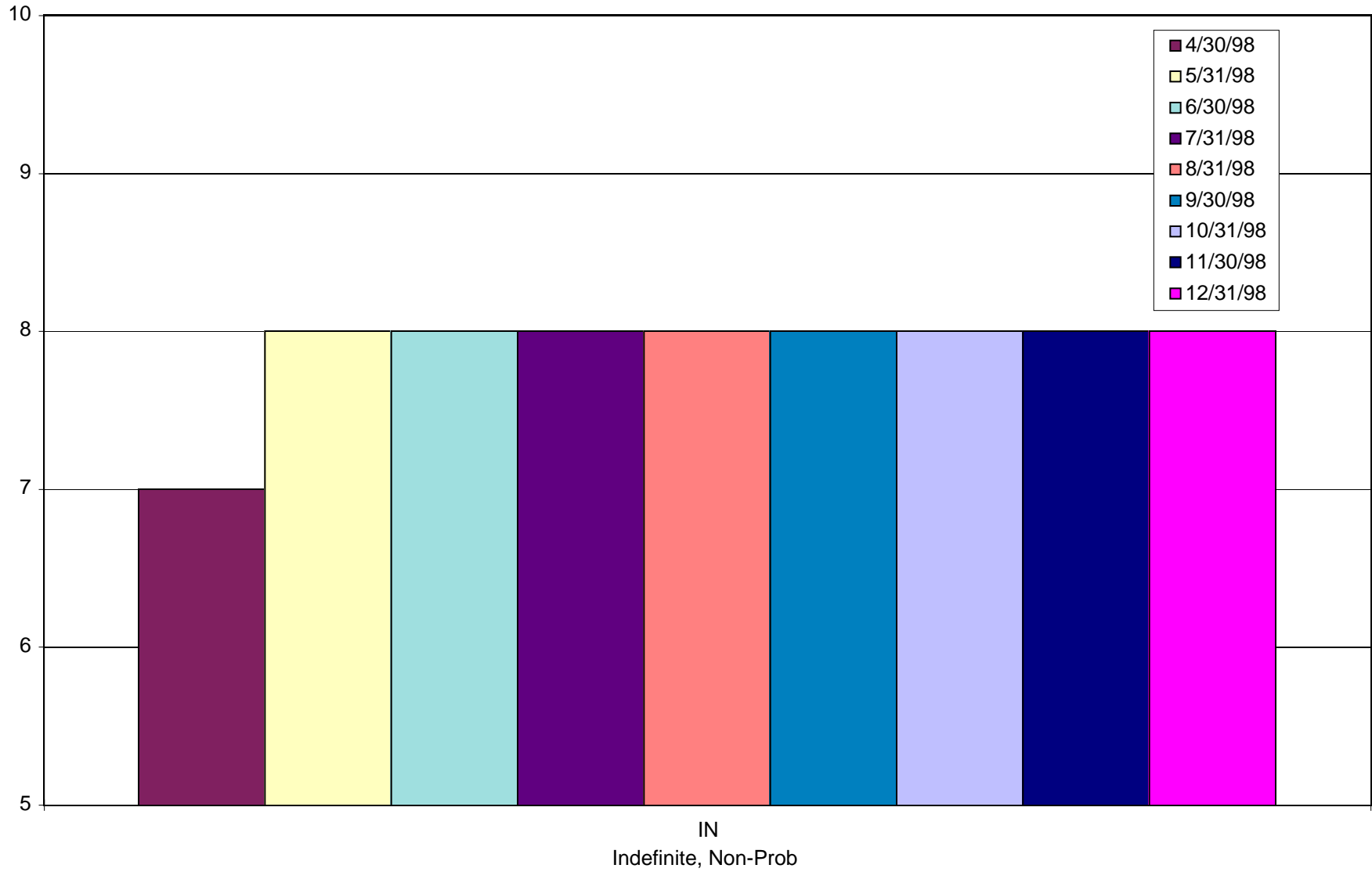
Term Appointees vs. Flexible Status Employees Other Jobcodes



Comparing Groups of 200s and 300s



50 Series Employees



Total Number of Employees

