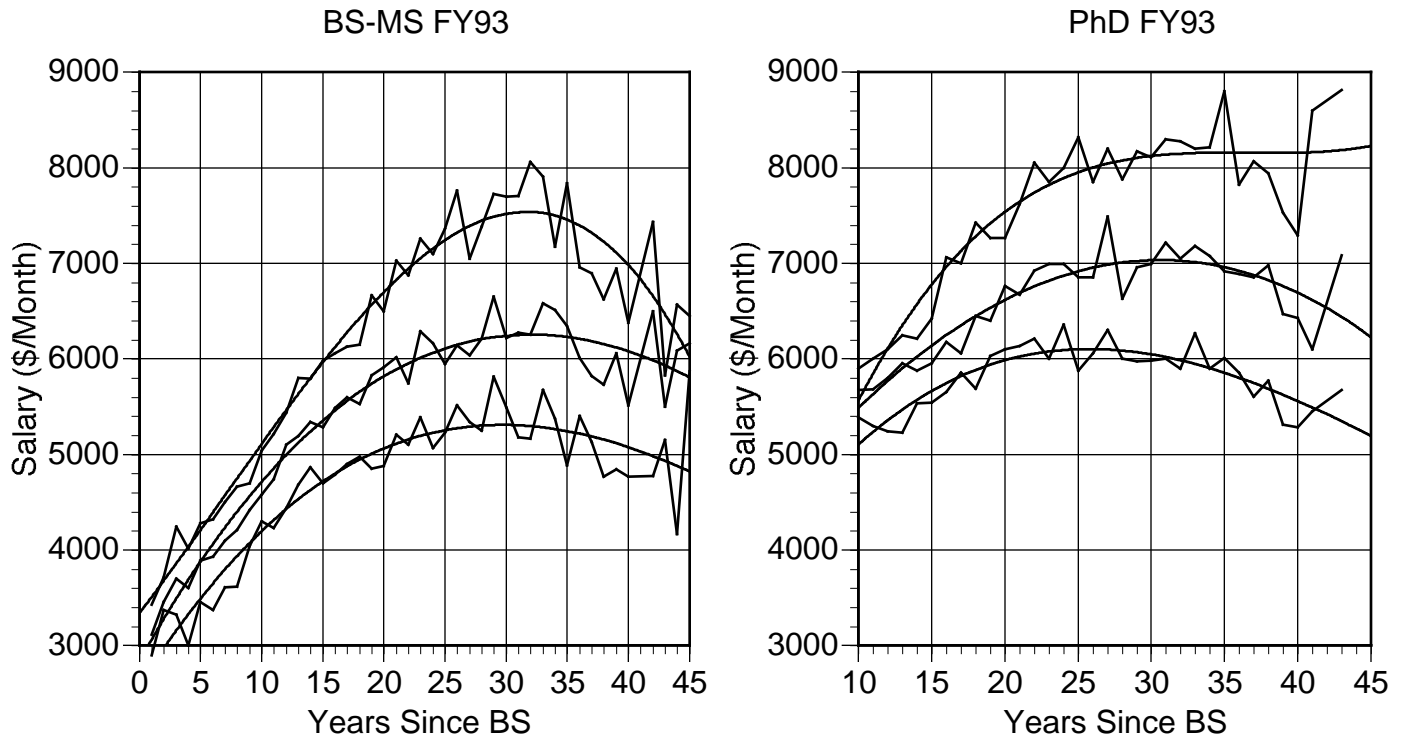


FY93 Maturity Curves



The curves above show salary distributions for LLNL's 200 series job-class scientists and engineers as a function of years since bachelor's degree. The data is for fiscal year 1993 (FY93). The 20th, 50th, and 80th percentiles are plotted. The smooth curves are fits of 3rd degree polynomials to the noisy raw data (jagged lines).